

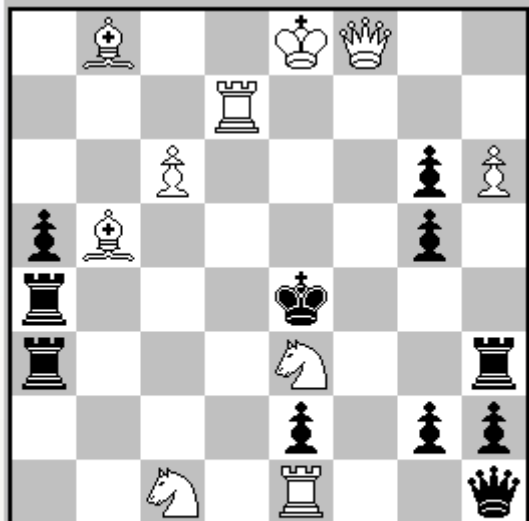
Toward a new development of the traditional Chess Composition by adding new pieces in the initial position

Kiril Stoyanov, Sofia (BG), published 19.3.2011

The question if the initial position of any traditional problem could involve additional promoted pieces interested me of very long time. During many years the requirement was that the initial position should not involve any new promoted pieces as it is the initial position of chess game. Many Russian composers, for example E. Umnov and others defended strongly such standpoint. The promotion of pawns in the Chess Composition was permitted during the play, that means after the first move.

The last wording of the Codex of the WFCC, Article 2 stipulates that “a chess composition consists usually of a position **on** the chess board” stipulating nothing if additional pieces could exist as per laws of chess last adopted in Dresden, 2008.

In October 2009 in “idee & form” I published my two mover with a third black rook in the initial position :



Kiril STOYANOV
idee & form 2009

‡2 v (10+11) C+

Try : 1. Sxe2? (2. Re7 #) :

1.... Taxe3 (a) 2. Sc3 # **A**

1.... Thxe3 (b) 2. Sg3 # **B**

1.... Kxe3 (c) 2. Sg1 # **C**

but 1.... Rc4!

Solution : **1. Lb5xe2!** (2. De7 #) :

1..... Taxe3 (a) 2. Ld3 # **D**

1.... Thxe3 (b) 2. Lf3 # **E**

1.... Kxe3 (c) 2. Lf1 # **F**

Changes of mates with tries are well realized. The black rook on “a4” played only technical role by avoiding a second solution.

In October – December 2005 issue of StrateGems was published following twomover problem of mine :



The solution is :

*

- 1.... Lxd5 (a) 2. Sc6 # **A**
 1.... Dxd5 (b) 2. Se6 # **B**
 1.... Txe5 (c) 2. Lxb6 # **C**
 1..... Se3 (d) 2. Dd2 # **D**

The first move is :

- 1. Se4-d6!** (2. De4 #)
 1.... Lxd5 (a) 2. Lxb6 # **C**
 1.... Dxd5 (b) 2. Sxf5 # **E**
 1.... Txe5 (c) 2. Dd2 # **D**
 1..... Se3 (d) 2. Dxe3 # **F**

Good content including Ruchlis and changes of mates but the first move is very bad. Even on that time I thought to replace the black rock on “f5” by second queen on “g7” with the same play. But I was not sure if it was in line.



Now I am sure that a new version with additional pieces in the initial position is much better than the old one in “classical way, namely : white : to move Kb4 on b1, no p. e7 plus Sd1, pp. b4, g3 black : Dg7 instead of Tf5, Sa3 to move on g6, p. b6 to move on b5, p. c2 to move on d2, plus p. a6.

In conclusion involvement of new promoted pieces in the initial position of chess problems before the first move (eventually and endgame studies) will better substantially their content and form and will open new ways in the traditional Chess Composition.